

Inspiring Great Spaces™



Technical Details

Thickness	4.5 mm	6.5 mm	8.0 mm
Wear Layer Thickness (mm)	0.45	0.80	0.80
Roll Width in meters	1.8	1.8	1.8
Roll Length in meters	20	15	11
Weight kg/Sqm	3.03-6.1	4.895	6.3

Technical Characteristics	4.5 mm	6.5 mm	8.0 mm
Shock Absorption %	>28	>37	>42
Sliding Co-efficient (range)	0.45 – 0.65	0.45 – 0.65	0.45 – 0.65
Energy Return	0.38 m/s	0.40 m/s	0.45 m/s
Ball Bounce	>97%	>98%	>98%
Vertical Deformation	2.3mm	2.8mm	3mm
Fire Resistance (grade)	C _{ii}	C _{ii}	C _{ii}
Chemical Resistance	FINE	FINE	FINE
Sound Insulation	20-22 db	23-25 db	25-28 db

Test Items	Test Method	Result
Surface Treatment	Resistance to staining	PUR coating with UV Treatment
Impact Resistance	DIN 18032	N/M
Abrasion Resistance	mm	≤ 10
Indentation Resistance	EN1016	mm
Friction Coefficient	GB/T14833-1993	0.45-0.65
Rebound Coefficient	GB/T14833-1993	≥ 0.85

Chemical Detection

Soluble Cadmium limits	mg/m ²	≤ 20	0.050
Volatile Content	mg/m ²	≤ 75	24
Vinyl Chloride Monomer	mg/kg	≤ 5	0.5
Soluble Pb limit	mg/m ²	≤ 20	0.45

** MOQ : 1000 Sqm Per Shade and 8 weeks lead time

WARRANTY

Product : Armstrong warrants its regular (first quality) product to be free from manufacturing defects for five (5) years from the date of purchase. The warranty is only valid for product supplied as per product specification guide. For detail warranty please contact Armstrong sales representative.

Weld Rods : Equivalent shade available. Size: 4mm x 100m per coil.

INSTALLATION

Installation shall be carried out according to manufacturer's recommendation. Special care should be taken to ensure the sub floor is level, clean, dry and hard. Contact Armstrong sales representative for installation procedure document. Sports flooring installation should be carried out by ARICS.

Recommended Adhesive : Use of Arobond 44 of Arofine polymer or SR 998 is advisable for installation of Armstrong sports flooring.

IMPORTANT NOTE

It is highly recommended to have zero leveled sub-floor for installation of sports flooring products. Please use self-leveling compound to level the sub-floor.



www.armstrong.co.in

HPS/00007/22014

Armstrong
FLOORING

Inspiring Great Spaces™



ATHLETA
SPORTS FLOORING

ATHLETA



LAWN TENNIS



BADMINTON



BASKET BALL



GYMNASIUM



ATHLETA

Wooden Series



BG-6819 __ #

Maple

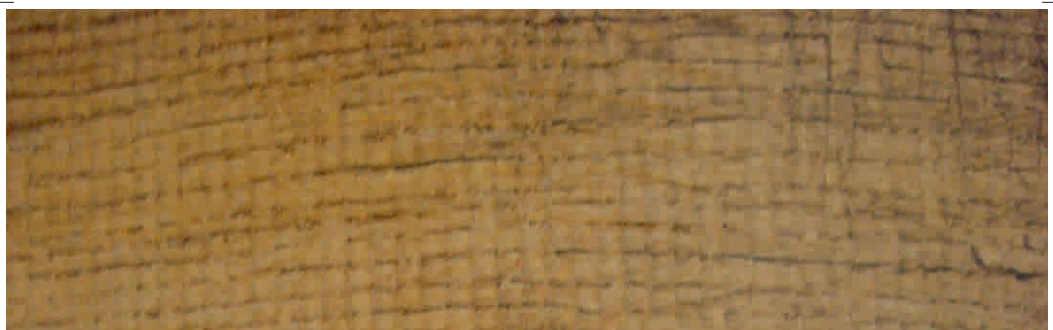
*WR-100-BG-6819



BG-6812 __ #

Ash

*WR-100-BG-6812

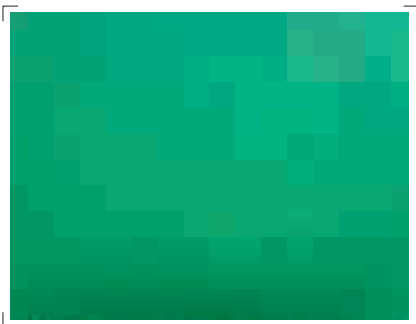


BG-6811 __ #

Peach

*WR-100-BG-6811

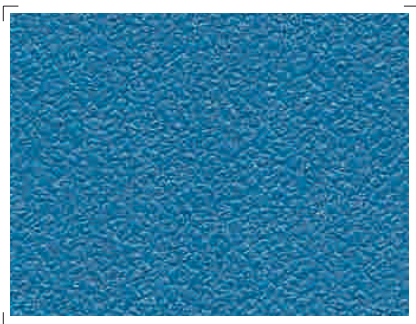
Textured Series



BG-402 __ #

Jade Green

*WR-100-BG-402



BG-301 __ #

Jade Blue

*WR-100-BG-301



BG-102 __ #

Weave Red

*WR-100-BG-102

ATHLETA

Comfort Series



BG R-8101 __ #

Pebble Red

*WR-100-BGR-8101



BG R-8201 __ #

Pebble Orange

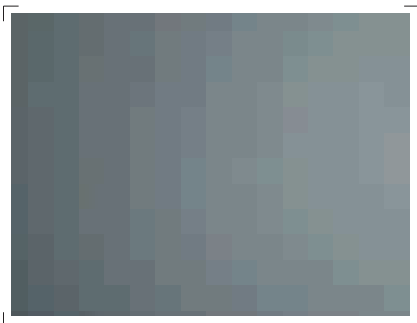
*WR-100-BGR-8201



BG R-8401 __ #

Pebble Green

*WR-100-BGR-8401



BG R-8501 __ #

Pebble Grey

*WR-100-BGR-8501



BG R-8303 __ #

Pebble Sky Blue

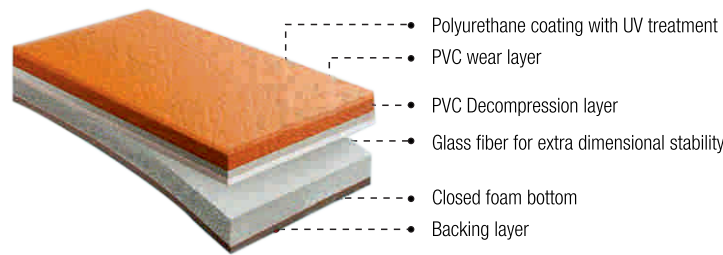
*WR-100-BGR-8303



BG R-8301 __ #

Pebble Navy Blue

*WR-100-BGR-8301



Athleta Sports Floor comes with wide range of advantages in terms of performance, safety, comfort, durability, aesthetic and non-existent maintenance costs.

ADVANTAGES

- Protect the physical integrity of athletes through the vertical and lateral shock absorption.
- More comfort due to its excellent impact absorption to minimize risk of injury at the joints and lower back.
- The surface of flooring is designed to allow a perfect level of grip in all directions.

POLYURETHANE – SEAMLESS SPORTS FLOORING

- Our seamless polyurethane sports floors are virtually maintenance free and exceptionally hard wearing. They provide consistent ball bounce and excellent cushioning to reduce fatigue and injuries.
- A stunning look to your sports floor, with no surface imperfections.
- Matching weld rods for the complete available range.

Indoor Application Areas : Gymnasium, Volleyball Court, Basketball Court, Badminton Court, Table Tennis, Fitness Centers, Clubs, Sport Shops, Kindergarten areas etc. Armstrong sports flooring is to be used for indoor application only.

* Matching weld rod code.
__ # Please mention 45 for 4.5mm | 65 for 6.5mm | 80 for 8.0mm i.e. BG-102 45 while placing order for Weave Red 4.5mm thick.