

Technical specifications

Flotex meet the requirements of EN 1307

| | | Flotex colour sheet Flotex vision sheet | Flotex planks |
|--|---|--|--|
| Total thickness | ISO 1765 | 4.3 mm | 5.0 mm |
| Total weight | ISO 8543 | 1815g/m ² | 4800g/m ² |
| Commercial use | EN ISO 10874 | Class 33 | Class 33 |
| Pile composition | fibre density 80 million/m² | 100% polyamide 6.6 | 100% polyamide 6.6 |
| Sheet roll width | | 2.0 m | 100 x 25 cm |
| Plank size | | | |
| Sheet roll length | | ± 30 m | 10 (2.5 m ²) |
| Packaging per carton | | | |
| Dimension stability | ISO 2551 | ≤ 0.2 % | ≤ 0.1 % |
| Slip resistance | BS 7976-2 (UK SRG pendulum) | Dry - low slip risk Wet - low slip risk | Dry - low slip risk Wet - low slip risk |
| Acoustical Impact noise reduction | EN-ISO 717-2 | $\Delta L_w \geq 21$ dB | $\Delta L_w \geq 19$ dB |
| Acoustical sound absorption | ISO 354 | $\alpha_w = 0,10$ (H) | $\alpha_w = 0,10$ (H) |
| Castor chair continuous use | ISO 4918 | $r \geq 2,4$ | $r \geq 2,4$ |
| Colour fastness to light | EN ISO 105-B02 | ≥ 5 | ≥ 5 |
| Indoor air emissions TVOC after 28 days | EN 16516 | $\leq 0,1$ mg/ m ³ | $\leq 0,1$ mg/ m ³ |
| Abrasion resistance | EN 1307 annex F | > 1000 cycles | > 1000 cycles |
| Water impermeability | EN 1307 annex G | Pass | Pass |
| Creating Better Environments | | | |
| Renewable electricity | | Flotex is manufactured using 100% electricity made from renewable sources. | |
| Recycled content | | Flotex sheet contains up to 20% recycled content by weight / Flotex planks contains up to 52%. | |
| Indoor air quality | | Flotex is approved by Allergy UK. All Flotex products are tested for indoor air emissions in accordance with EN16516 after 3 days and 28 days. Flotex sheet has ultra low emissions. | |
| LCA | | LCA is the foundation for securing the lowest environmental impact. | |
| REACH (European regulation) | 1907/2006/CE | Compliant ⁽¹⁾ | Compliant ⁽¹⁾ |
| Flotex meets the requirements of EN 14041:2004 | | EN 14041:2004 CE 1200301-DoP-107 | EN 14041:2004 CE 1200201-DoP-101 |
| Reaction to fire | EN 13501-1 | B ₂ s1, L, CS | B ₂ s1, L, CS |
| Slip resistance | EN 13893 | $\mu \geq 0,30$ | $\mu \geq 0,30$ |
| Thermal conductivity | EN 12524 | 0.06 W/mK | 0.06 W/mK |
| Body voltage | ISO 6356 | ≤ 2.0 kV | ≤ 2.0 kV |
| Content of specific dangerous substances | EN 14041 | Compliant | Compliant |

⁽¹⁾ The articles (products) do not contain substances of the candidate list published by ECHA (SVHC substances of very high concern) to be declared in accordance with REACH
Our recommended adhesive for our collection for Flotex Sheet is 640 Eurostar Special. Please contact customer services for more information.
All Forbo Flooring Systems' sales organisations worldwide have a certified Quality Management System in accordance with ISO 9001.
All Forbo Flooring Systems' manufacturing operations have a certified Environmental Management System in accordance with ISO 14001.
The Life Cycle Assessment (LCA) of Forbo Flooring Systems' products is documented in individual Environmental Product Declarations (EPDs) which can be found on all of our websites.



Find us on



creating better environments

flotex® colour | vision | planks

Flotex, a choice, not a compromise

Flotex is a high tech textile which brings together the world of resilients and textiles connecting key performance indicators into one single product, that delivers all you can expect from an innovative flooring solution.

Durable and comfortable

Discover the toughness and durability of Flotex which comes as a result of the **80 million nylon 6.6 fibres per square meter**, while experiencing the quietness and comfort normally only associated with a carpet as a result of the impervious cushioned backing.

Quiet yet Hygienic

The nylon fibres not only perform in sound absorption and comfort, they also capture allergens and fine dust from the air, all of which they effortlessly release in any cleaning action in both dry and wet conditions. Through its construction Flotex is protected against mould and odour's whilst keeping up its appearance, as the floor restores to mint condition after every cleaning action.

Warm while washable

Simple every day vacuuming removes any dirt or dust trapped in the dense nylon surface. However also steam cleaning or deeper mechanical cleaning can be used after heavy soiling, requiring a minimum of traditional detergents.

Simple cleaning action already restores Flotex to its original appearance. The wide array of colours and designs in which Flotex is offered, remain as vibrant and lively as the day the floor was installed.

Safe but sound absorbing

Flotex provides both low in-room impact noise performance (class A) as well as good impact sound reduction (> 19 dB), meaning a quiet room and a quiet building. Flotex also meets the HSE wet and dry slip resistance classifications for use of flat surfaces and ramps.



* Only for planks

Forbo
FLOORING SYSTEMS

Textile
Flocked flooring

flotex® colour | vision | planks



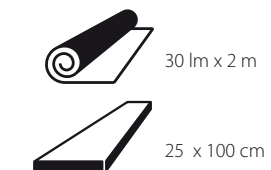
Forbo

IN STOCK IN INDIA



Textile Flocked flooring


flotex® colour | vision
flotex® planks



creating better environments

Forbo
FLOORING SYSTEMS

flotex® planks

25 x 100 cm 
ΔL_w = 19 dB



141002 | converge aurora



141003 | converge zenith



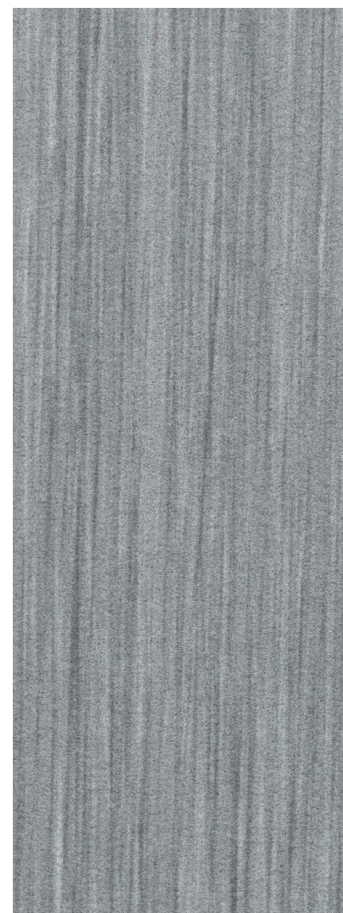
141005 | converge radiant



141006 | converge arc



141001 | converge prism



111001 | seagrass pearl



111002 | seagrass cement



111004 | seagrass charcoal

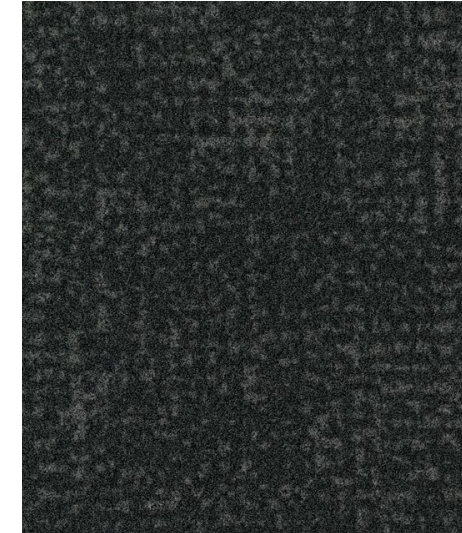


141003 | converge zenith

141001 | converge prism

flotex® colour | vision

2 lm 
ΔL_w = 20 dB



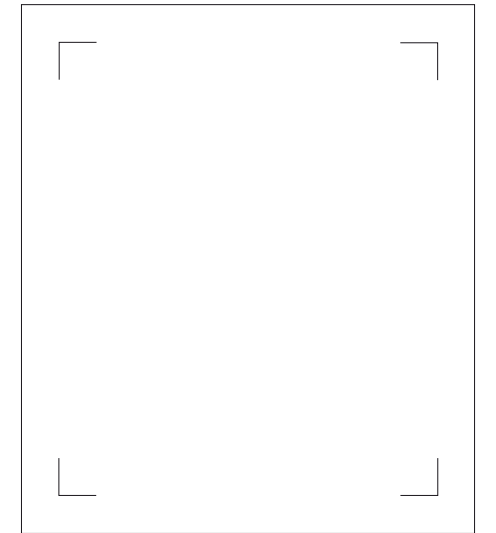
246007 | ash



246010 | chocolate



246026 | red



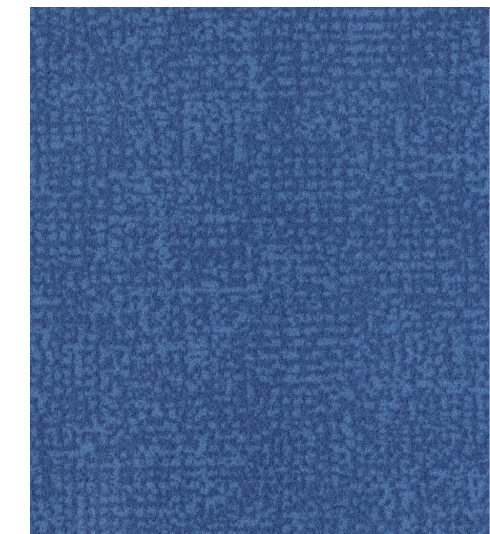
368191 | berlin anthra



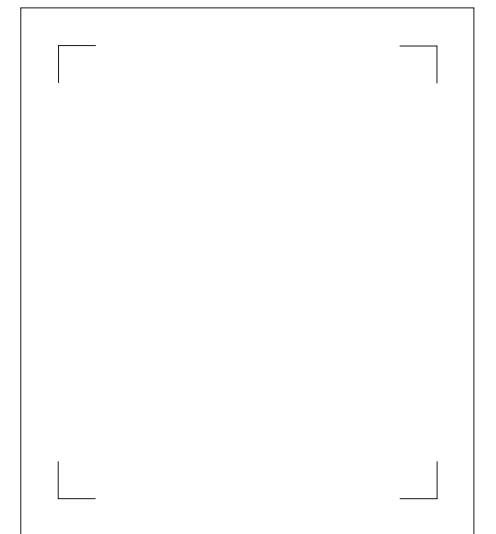
246005 | nimbus



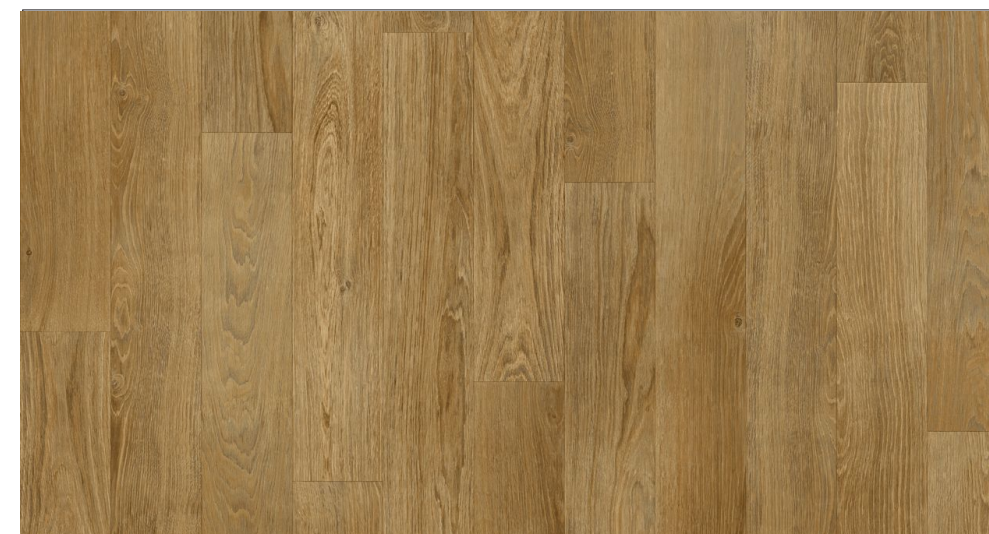
246028 | jade



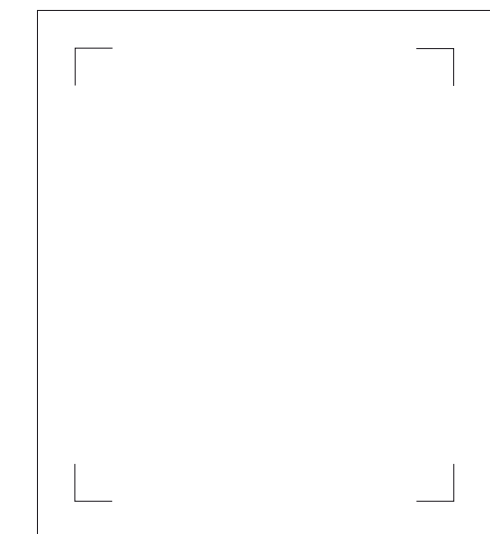
246020 | lagoon



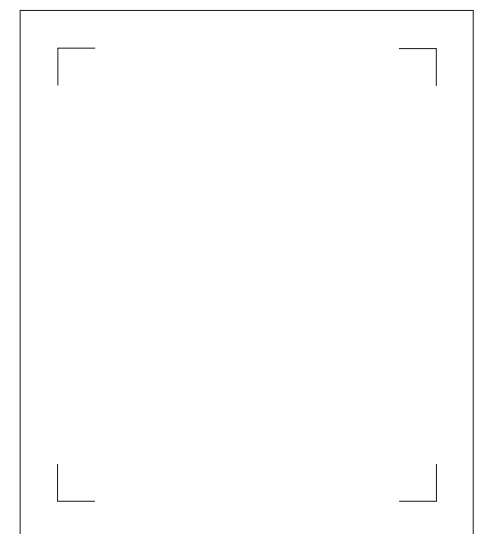
368194 | berlin indigo



010036 | wood american oak



368074 | berlin beige



368176 | berlin grey